

## THE CHESTNUT

Single-level, 2 bedroom plus den, 2 full baths, living room, dining room, designer kitchen, 2 car attached garage, full basement, deck or optional sunroom.

1463 Sq Ft

The Chestnut is a contemporary Ranch home with distinctive features including a corner entrance with porch and open foyer. The grand living space offers a vaulted ceiling over the living and dining rooms with plenty of windows and sliders onto a optional sunroom or deck. The kitchen features a breakfast bar perfect for a quick bite or entertaining. The master bedroom suite has a walk-in closet and private bath with a double sink vanity. Of course, there is a guest bedroom and den, which can be used as his and her office or hobby space.



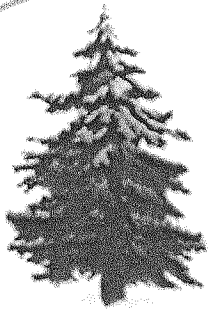
For illustrative purposes only.  
Dimensions may vary.



46 LOWELL ROAD • HUDSON, NEW HAMPSHIRE 03051 • PHONE 603-880-7799 • FAX 603-880-8926

[www.sousarealtynh.com](http://www.sousarealtynh.com)

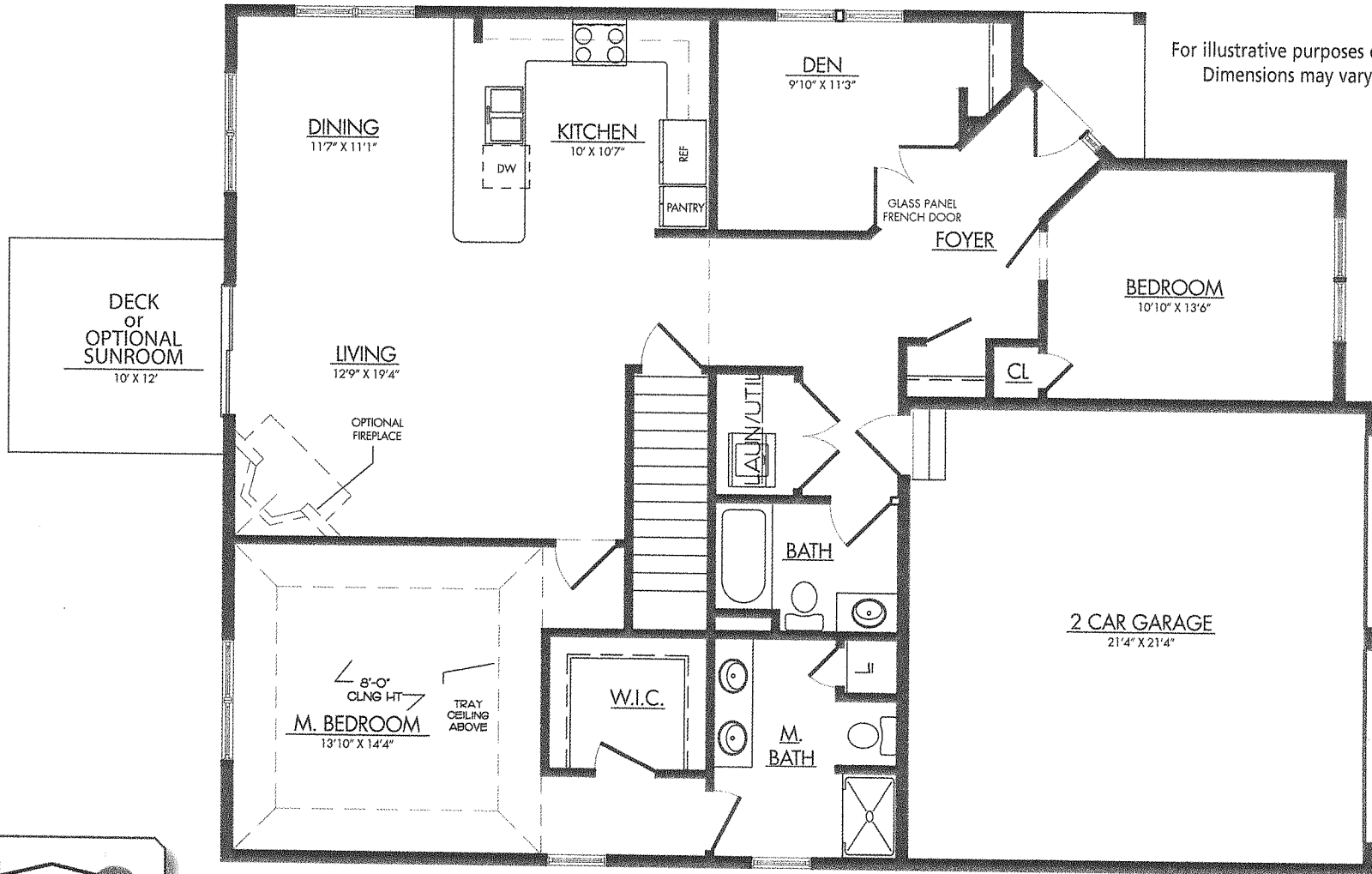




# PINEWOOD ESTATES

THE CHESTNUT

# \$ 354,900.00



46 LOWELL ROAD • HUDSON, NEW HAMPSHIRE 03051 • PHONE 603-880-7799 • FAX 603-880-8926

[www.sousarealtynh.com](http://www.sousarealtynh.com)

